



MINI USB DVB-T TV RECEIVER

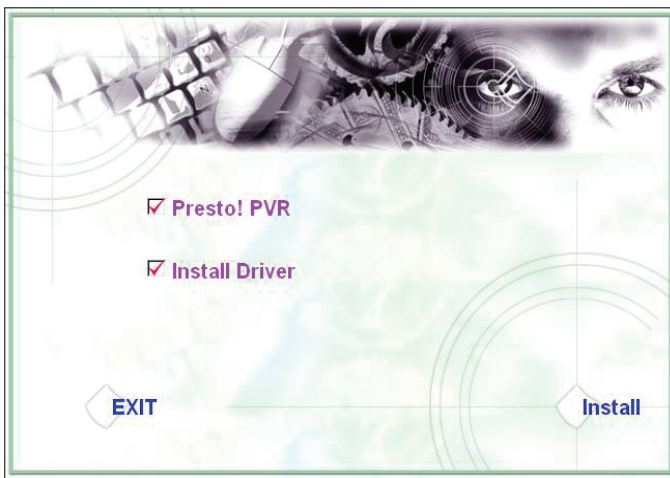


Quick Installation Guide

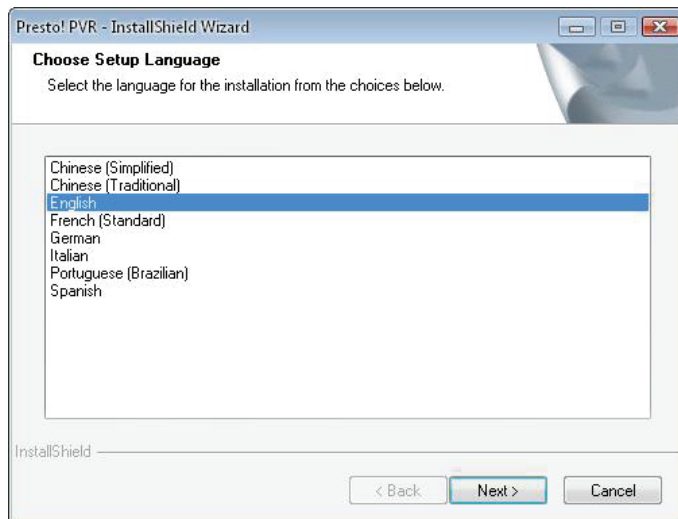
1. Make sure **No dongle plugged to PC.**



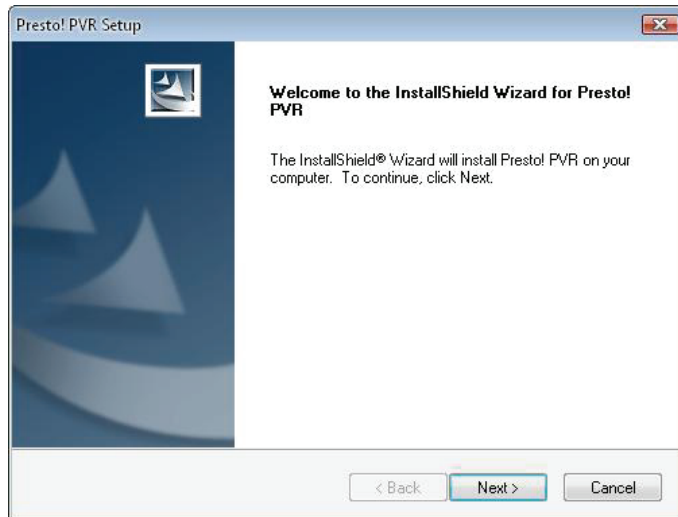
2. Place CD into CD-ROM drive of your desktop or laptop.
If the installation does not start automatically, please go to the CD directory and execute the “**setup.exe**”.



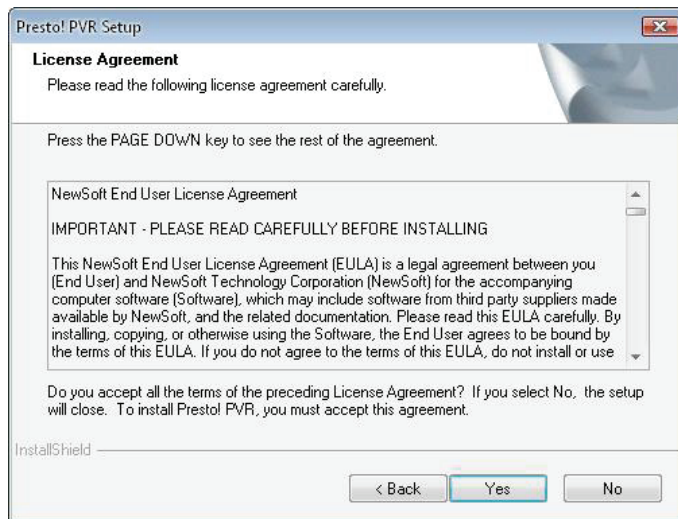
3. Select the language then click “**Next**”.



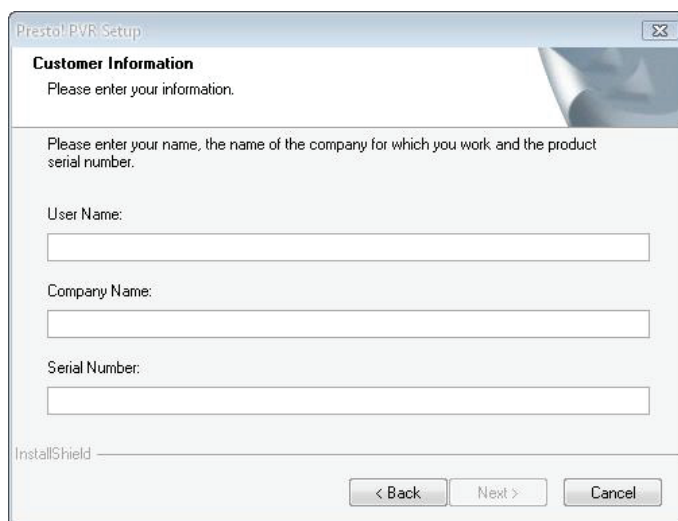
4. Click “Next”



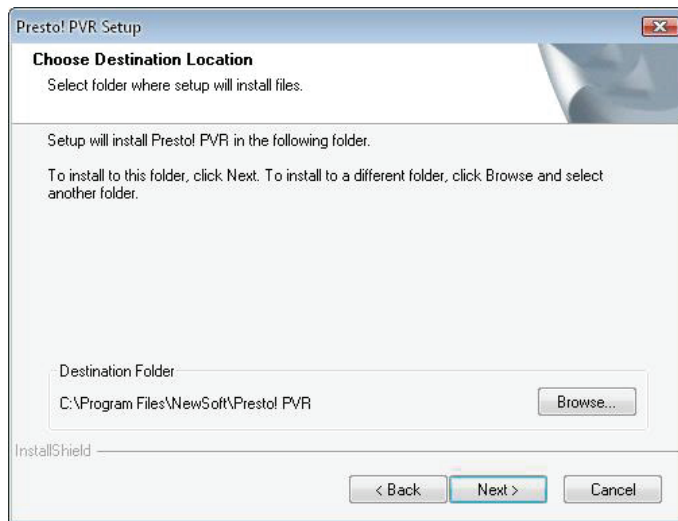
5. Click “Yes”



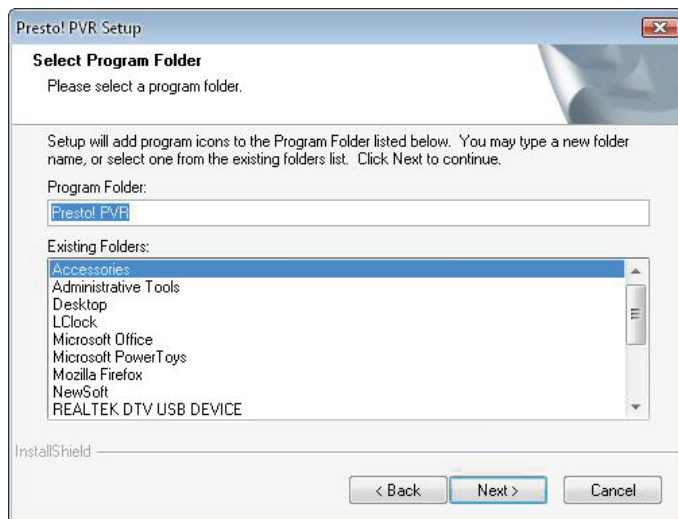
6. Enter the User, Company Names and Serial Number. Then click “Next” to continue.



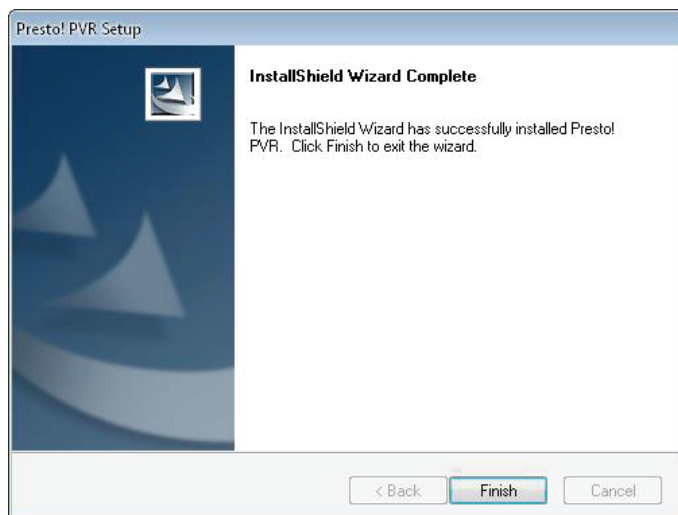
7. Select installation Folder (default directory is C:\Program Files\NewSoft\Presto! PVR). Then click **“Next”**



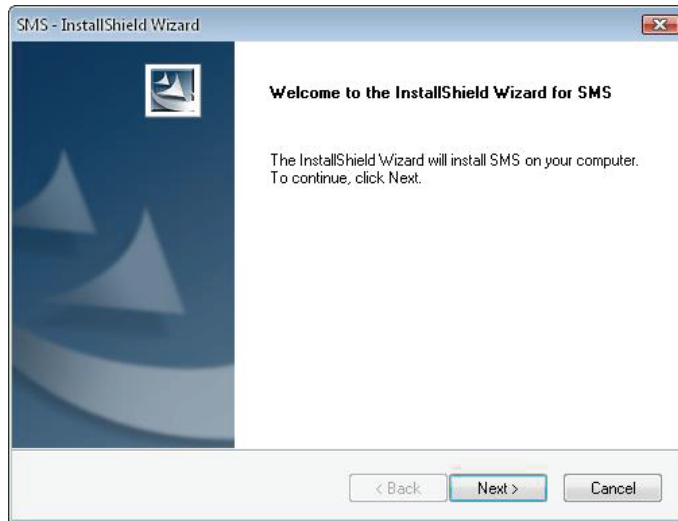
8. Enter the folder name (default is Presto! PVR), then click **“Next”**.



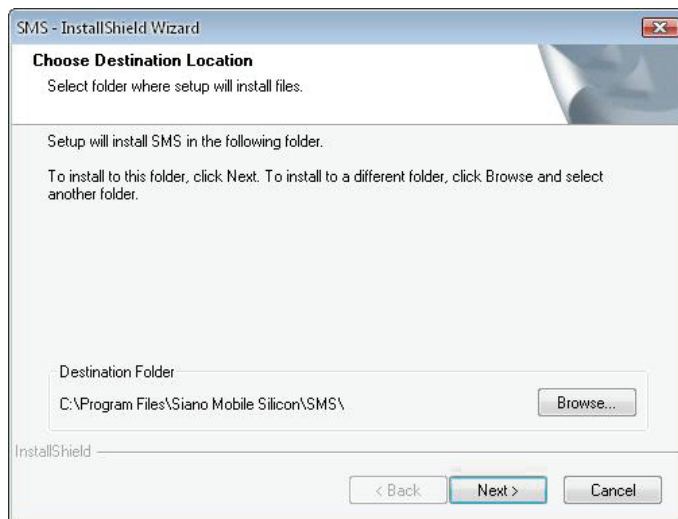
9. After the software installed successfully, please click **“Finish”**.



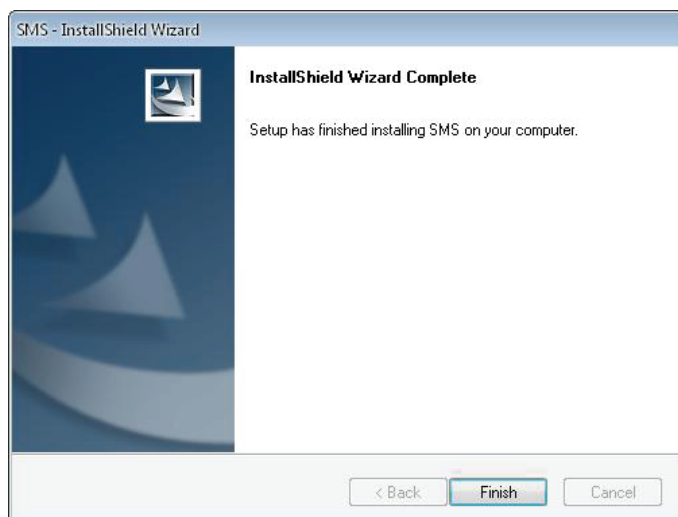
10. For the driver installation, please click **“Next”**.



11. Select installation folder (default directory is C:\Program Files\Siano Mobile Silicon\SMS\). Then click **“Next”**.



12. Click **“Finish”**.



13. Plug TV Tuner into USB port and double click the icon “Presto!PVR” on the desktop.

14. After scanning completely please click “Finish”.
Now you can enjoy watching TV!

