



DA-70702

USB2.0 Fingerprint 2.5" HDD Enclosure

Quick Installation Guide

System Requirement :

- INTEL PENTIUM II 233 or higher
- 128MB RAM or higher
- Available for USB 2.0 port
- WINDOWS 2000
- WINDOWS XP
- WINDOWS VISTA

Product exterior :



Accessory

USB Cable (A to Mini B)



USB DC Power Cable

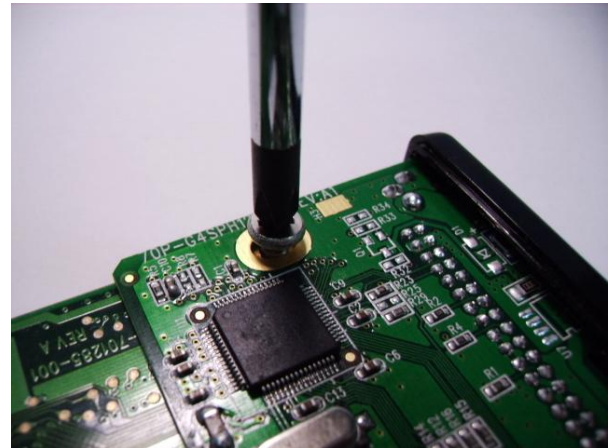


Installation

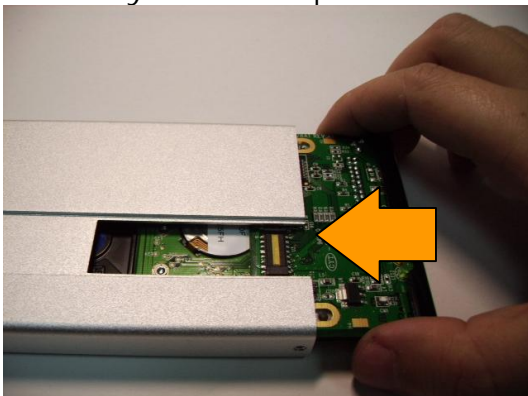
1. Remove the screw.



2. Connect 2.5" HDD to IDE slot, and fasten the screw.



3. Carefully slide and place HDD inside the enclosure.



REMARK :

When slide HDD inside the enclosure, please have the PCB smoothly slide in the notches on both sides of the aluminum case.

4. Tears up the fingerprint cover the label, and covers the fingerprint cover.



5. Fasten the screw.



6. Plug the USB DC Power Cable to the enclosure.



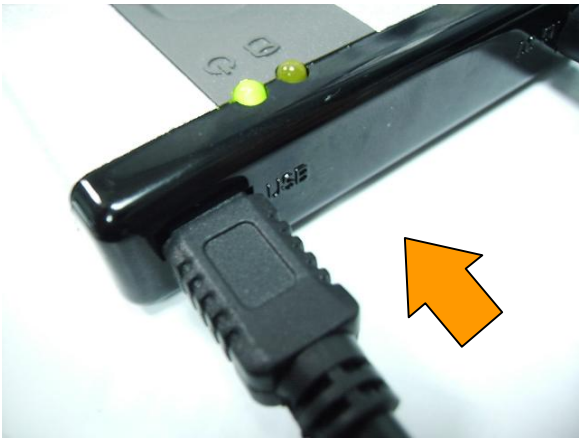
Attention:

Please do not use any power other than USB DC Power Cable in order to prevent damages on the enclosure.

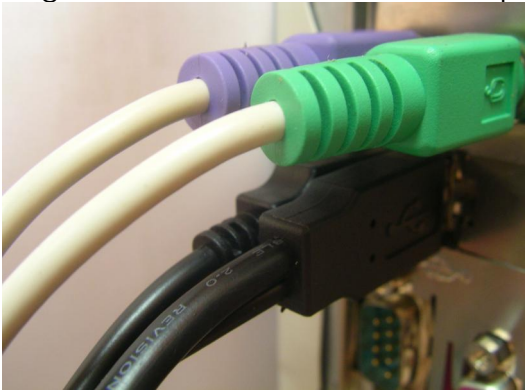
7. Plug the USB DC Power Cable to the USB port of the computer.



8. Plug the USB Cable to the USB Mini B port of the enclosure.



9. Plug the USB Cable to the USB port of the computer.



REMARK :

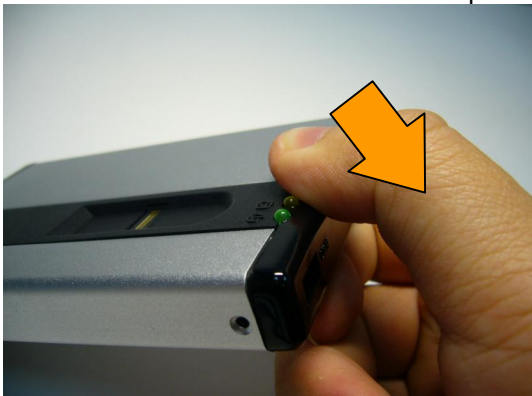
Please remove all USB storage devices from the computer before application software installation at the first time.

Change Hard Disk

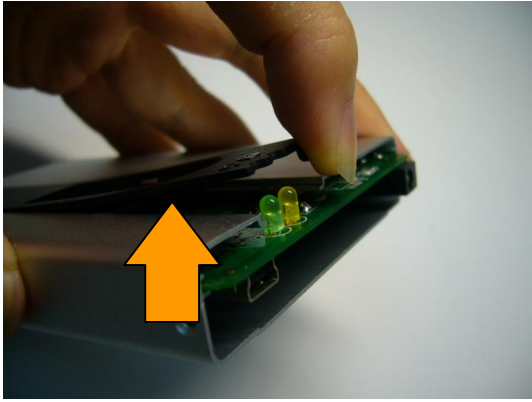
1. Remove the screw.



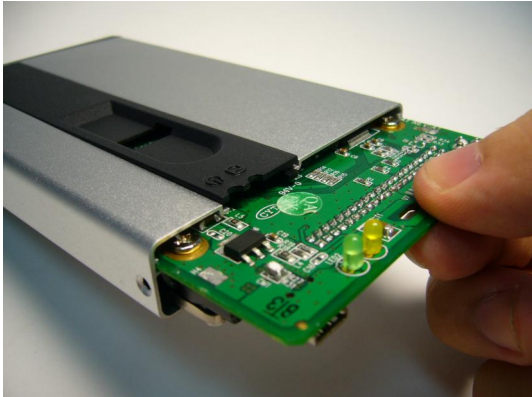
2. Pullout the cover from the aspect just like the arrow.



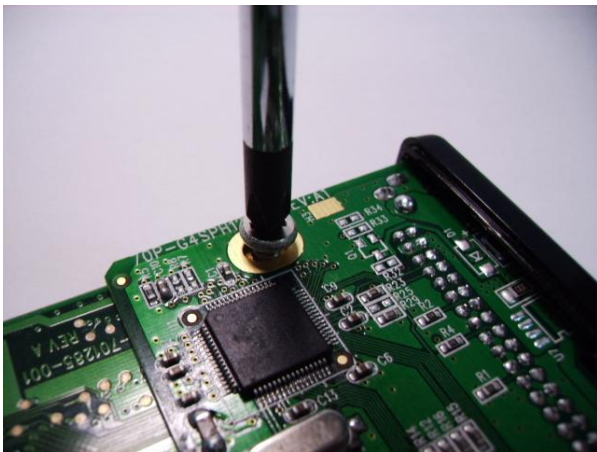
3. Pull the head of the cover.



4. Take out PCB board.

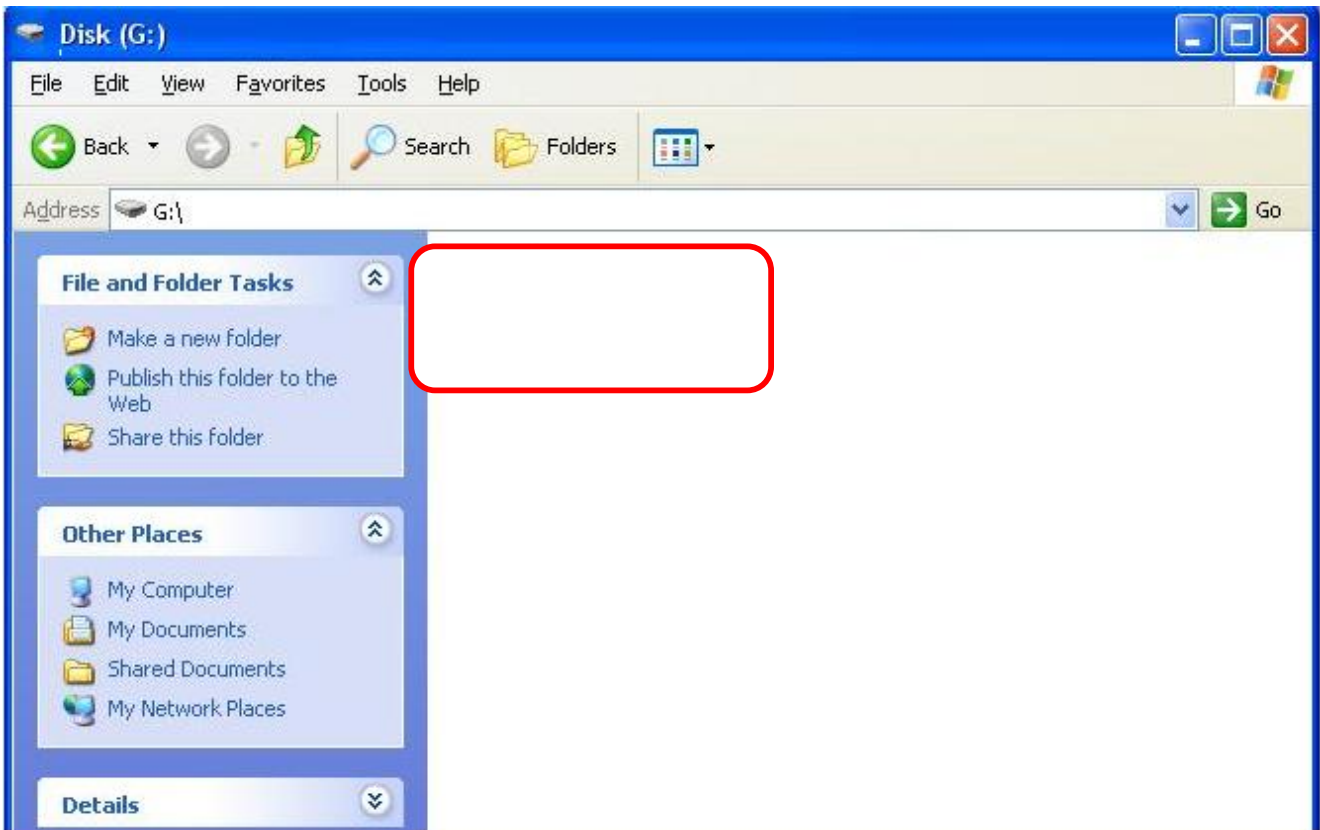


5. Remove the screw, and pull the new one into slot. When new disk was ready please assemble as step 3 to 9.

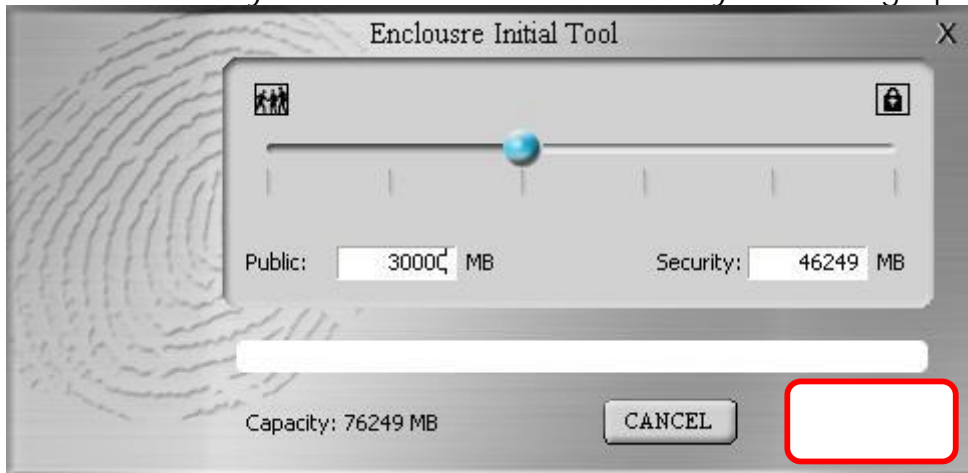


Program Installation

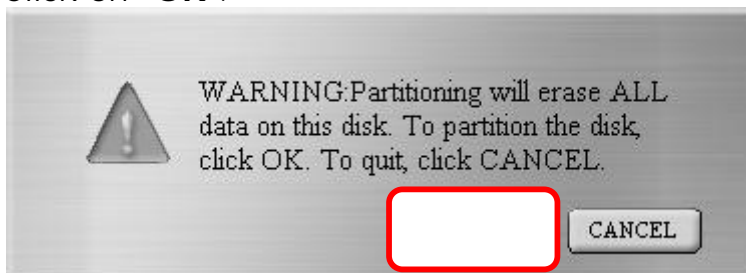
1. Please make sure you have removed other USB storage devices from computer.
2. Put CD into CD ROM player.
3. Please run "**Initial.exe**" in CD.



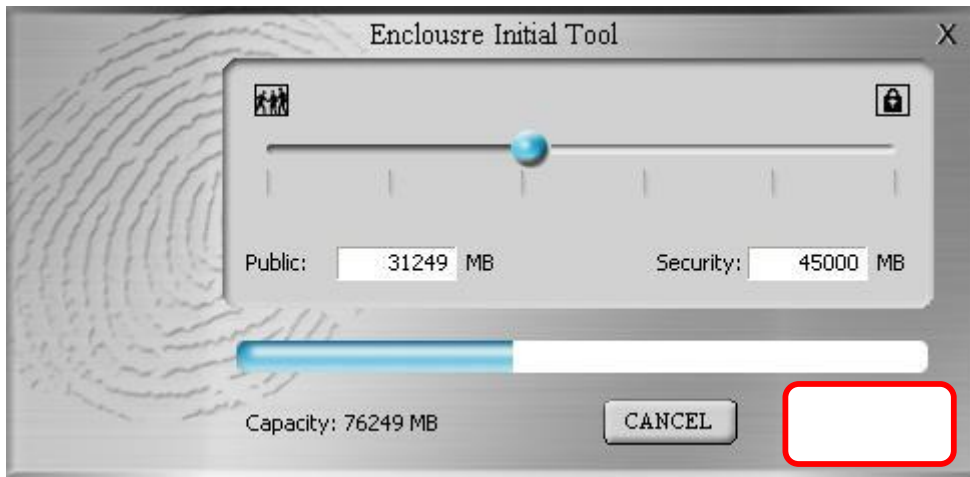
4. Please specify the space of "Public" & "Security" disk, then click on "Start".
Data in Security Area could be accessed only when fingerprint is verified.



5. Click on "OK".



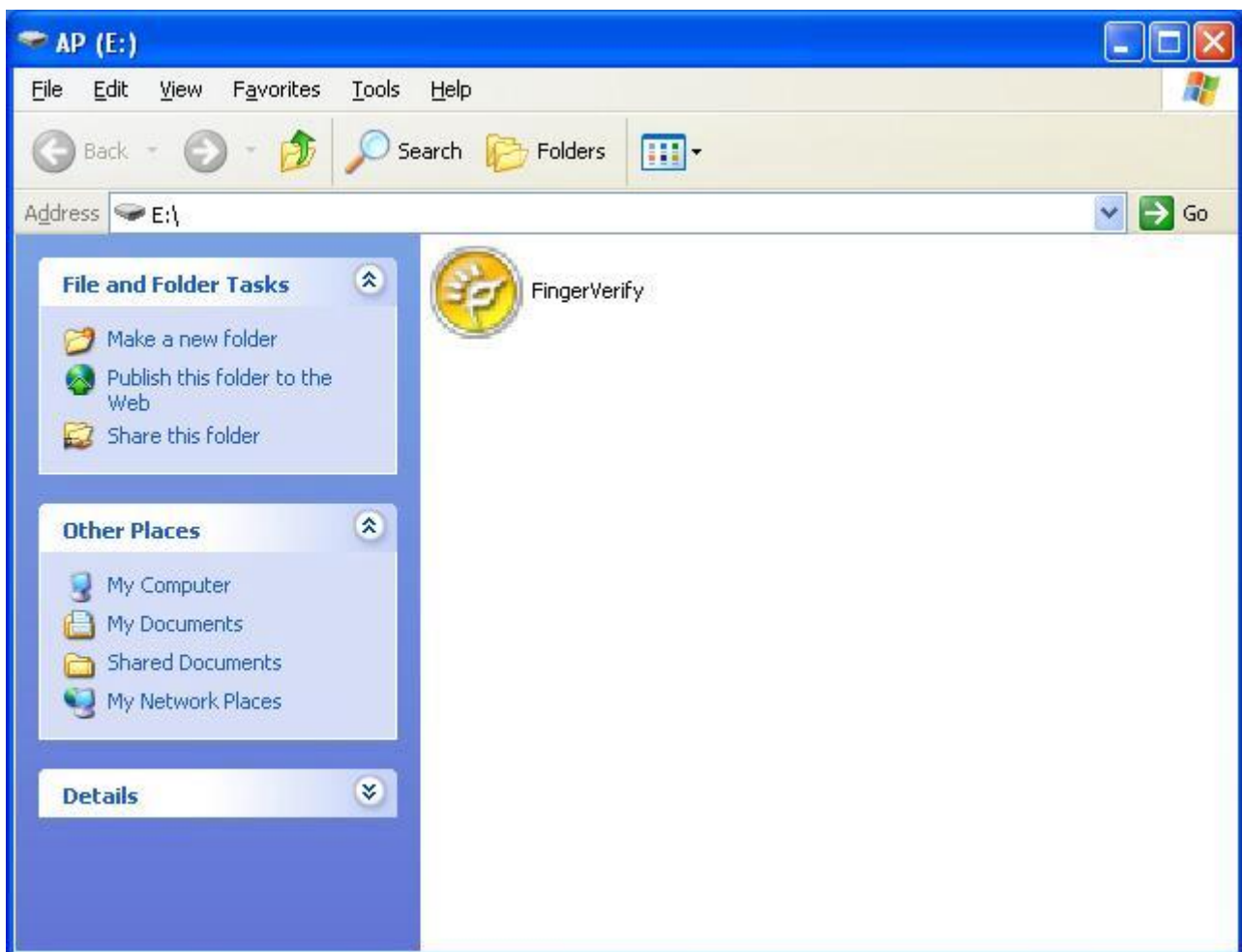
6. The Format is proceeding.



Warning:

Please do not unplug USB Cable during hard disk running, because it may damage hard disk and device.

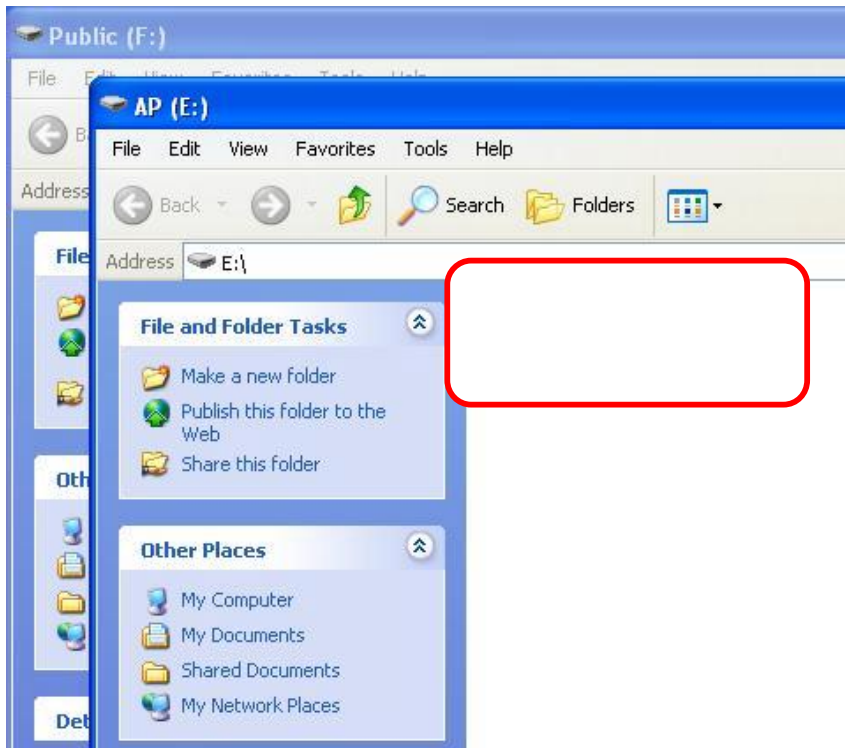
7. Please close the "AP" window on the screen, and unplug the enclosure.



First Time Fingerprint Enrollment

When first plug the enclosure back to computer after software is successfully installed, the following "AP" folder window will appear.

1. Run "**FingerVerify.exe**" in AP folder.



2. "**Fingerprint Registration**" window.



3. Please click on the finger which you are going to register, and click on "**Next**".



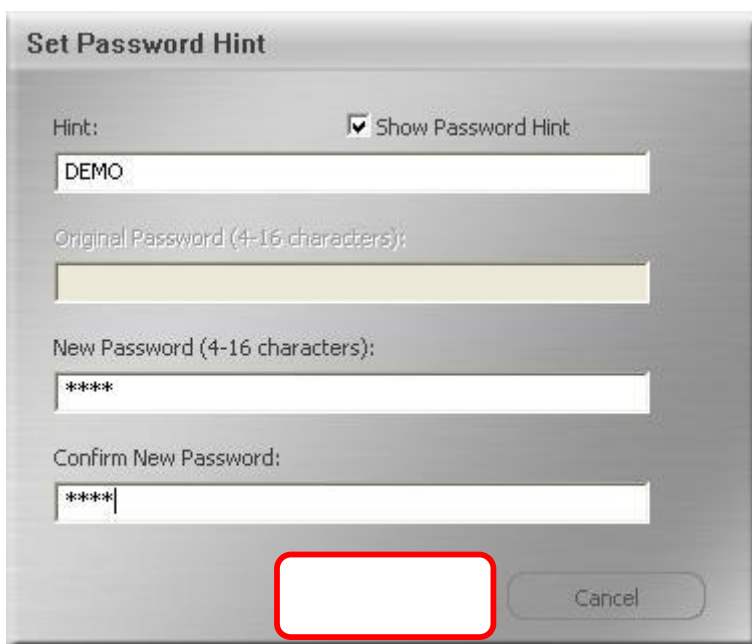
4. Please swipe on fingerprint sensor with the finger you are going to register.



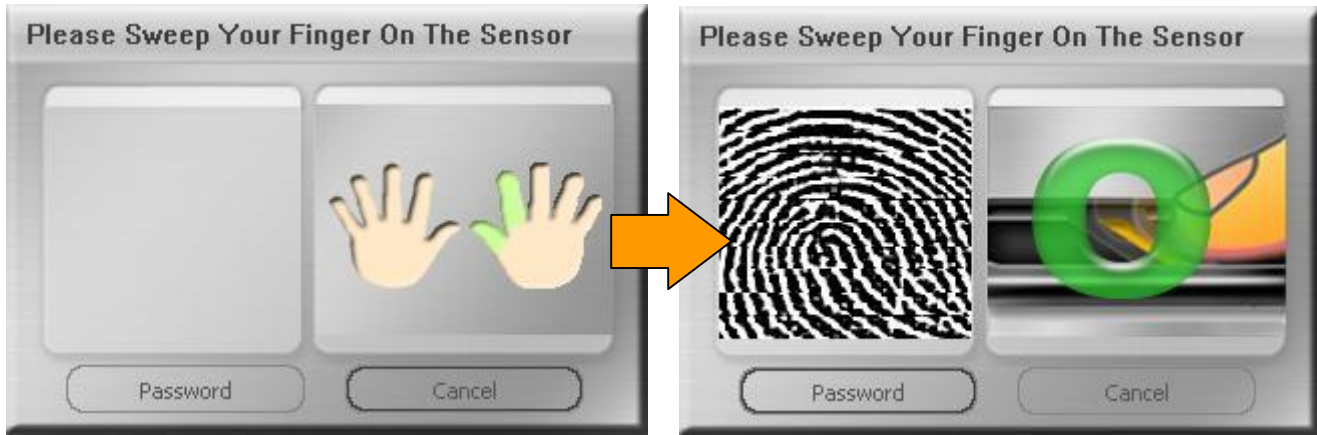


Please keep swiping your finger on fingerprint sensor until "OK" icon is showed.

5. Please key in a password with which you could replace fingerprint verification.

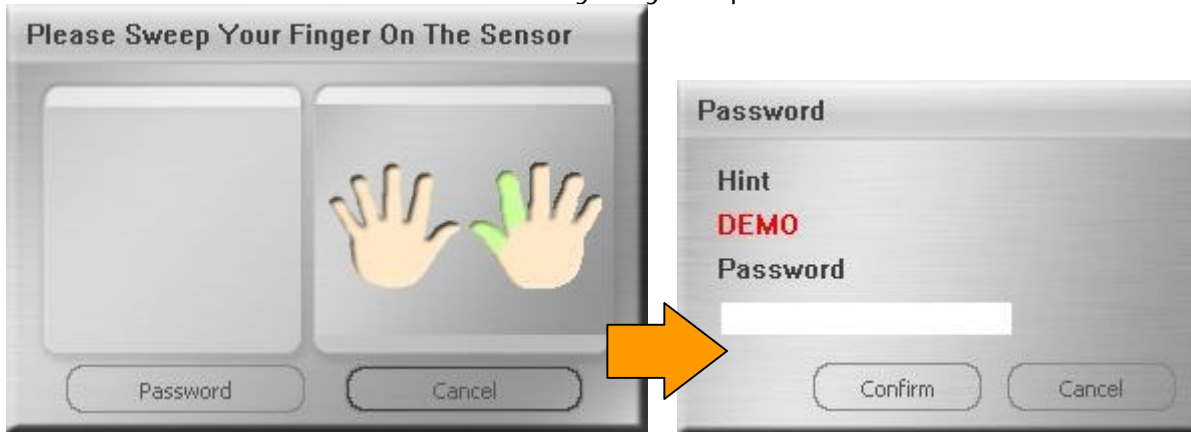


6. Then, you will be asked to input your fingerprint as below.

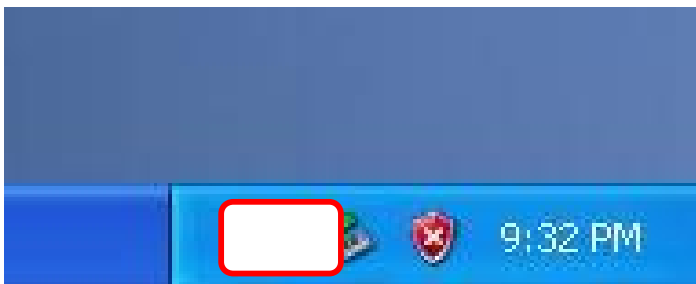


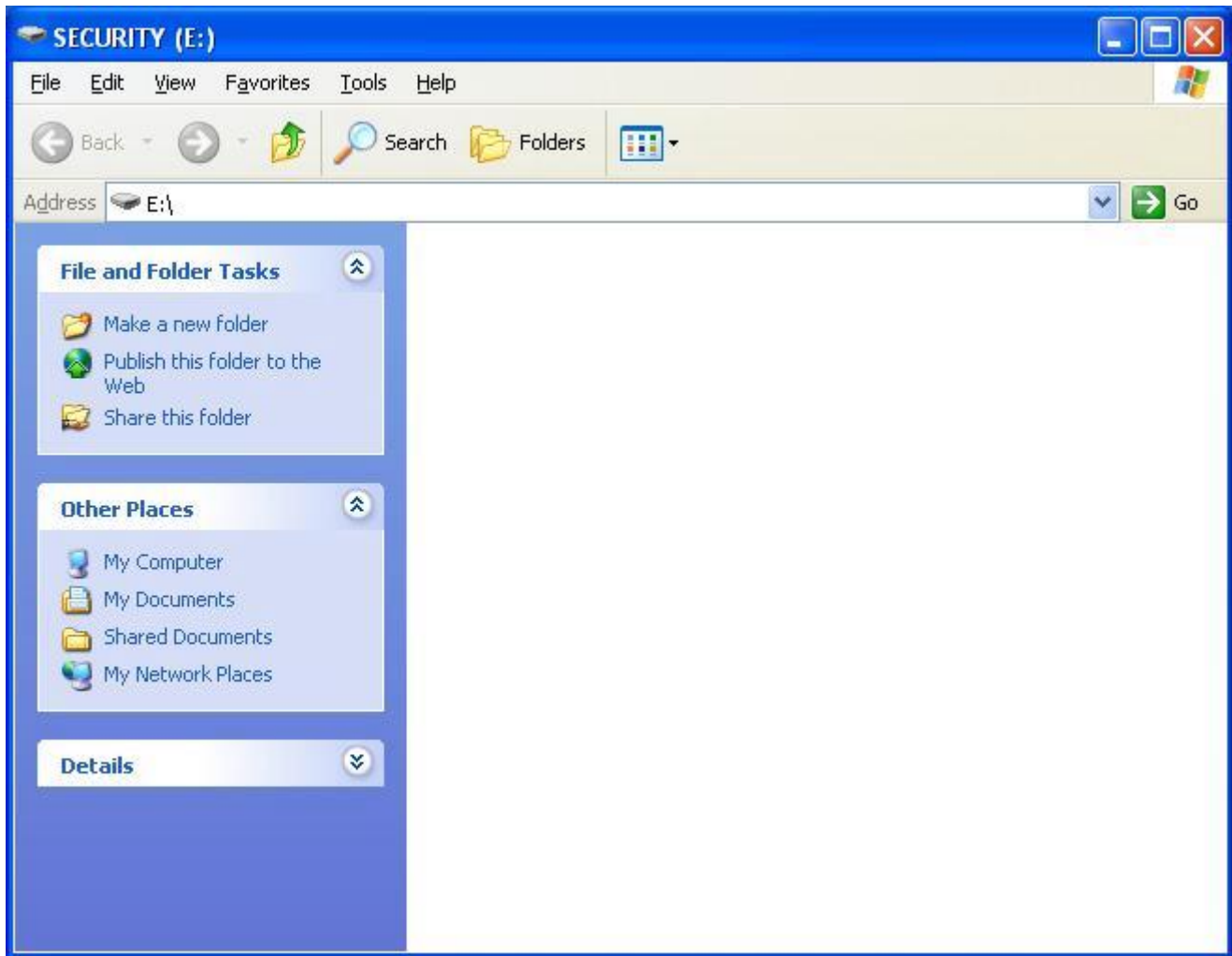
When your fingerprint reader is not available, you could also key in password instead it.

Please click on "**Password**" and key in your password.

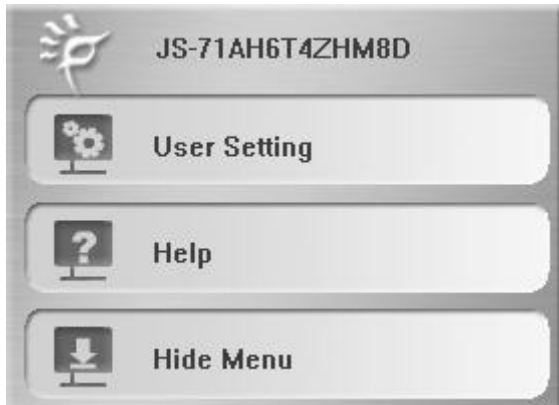


7. After the fingerprint software has been installed successfully. You can see the "Security" window on the screen, and software icon in the corner of icon tray.





8. Please Click on the icon to activate the software.



For more information about software functions, please refer to software manual in CD.