



**SATA - USB
3,5" HDD ENCLOSURE**

(DA-70575)

User's Manual

CONTENT

| | |
|----------------------------------|---|
| 1. Characteristics | 1 |
| 2. System Requirements | 2 |
| 3. Driver Installation | 3 |
| 4. Verification | 5 |
| 7. FAQ | 6 |
| 8. CAUTION | 7 |
| 9. ADVICE | 7 |

1. Characteristics

- * Compliant with both USB 2.0 and USB 1.1 standard specifications
- * High-speed data transfer rate up to 480 Mbytes
- * 64/512 bytes data payload for full/high speed bulk endpoint
- * Supports 8-bit/16-bit standard PIO mode interface
- * Supports 16-bit multi-word DMA mode and Ultra DMA mode interface(Ultra 33/66/100)
- * Supports power down mode and USB suspend indicator
- * Supports wake-up ability

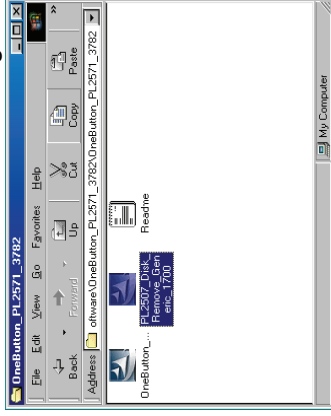
2. System Requirements:

- 1) USB Interface: an available USB port
- 2) OS: windows98/ME/2000/XP/Vista Mac OS 9.2 10.x or later.

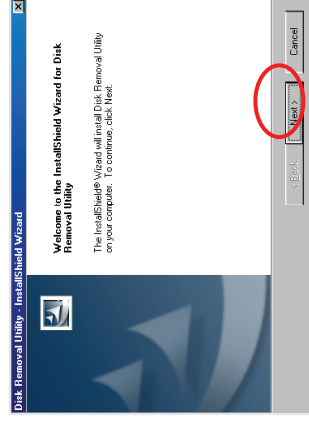
3. Driver Installation

☆ Windows 98SE

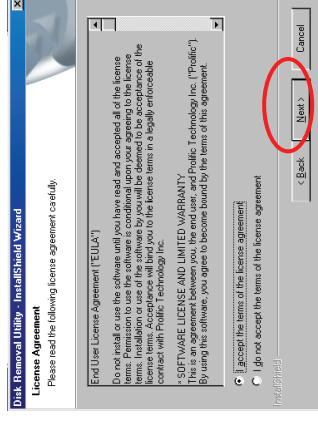
- 1) Insert the driver CD-ROM into the CD-ROM drive , you Will meet the following picture, please double-click it to start installing



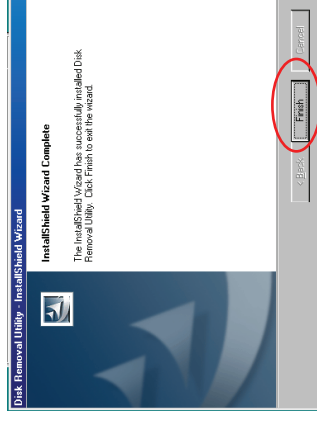
- 2) When you see the following screen, please press "Next"



- 3) When you see the following screen, Please choose "I accept the terms of the license agreement" and Click "Next" To Continue



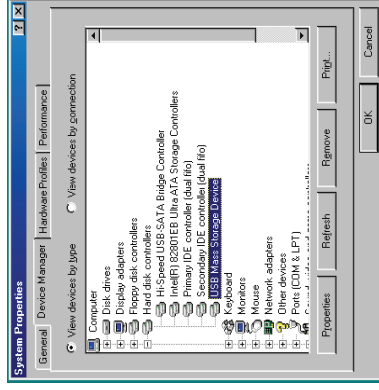
- 4) When you see the following screen, please press "Finish"



- ✧ **Windows ME/2000/XP/Vista, Macintosh OS9.X/10.X**
Need no driver installation.

4. Verification

Plug the device to your computer ,after divers are loaded,Please track the path “My computer→Properties→Device Manager” and expand the item “Universal Serial Bus Controllers”, you should meet the following screen.



7. FAQ

- Q1: I could see the icon at the right down corner on the screen, but I still couldn't find my external HDD.
- A1:
- a. Please make sure your HDD has been installed correctly.
 - b. Please make sure your HDD has been set in "Master" position.
 - c. Please make sure you have installed correct driver for this enclosure.
 - d. Please make sure your HDD has been formatted. If no, please format your hard drive first.
 - e. If you are sure you have installed correctly all the hardware and software, please follow the steps as below to catch your HDD.
 - i. Enter "Control Panel" and enter "System" icon
 - ii. Double click it to find a "System Manager".
 - iii. Find a "Disk" category. There should be 3 drivers, double click "Generic STORAGE DEVICE USB Device."
 - iv. Find the "Setting" button and choose the option "Removable Drive".
 - v. Your computer will automatically assign a new letter to this portable HDD after restarting your computer.

Q2. Why I couldn't find my enclosure at all?

A2: This situation sometimes happens to some notebook models. That's because a few notebook manufacturers remove the power current from USB port to reduce the heat in the notebook. Or some old models couldn't supply sufficient power for USB. This problem mostly couldn't solve the problem, please buy a AC power adaptor to offer sufficient power for enclosure.

8. CAUTION!!

- a. When using USB 2.0-interface model, external power is needed when
- b. HDD consumes power over 550mA.
- c. If you are not sure what OS you are using, please contact your PC dealer.
- d. Please don't put this external enclosure in a humid or high-temperature environment.
- e. If your first installation is failed, please firstly remove the wrong device through the path as below:
Path=Control Panel > System > System Manager > PCI to USB Open Host Controller > Please remove the items with "?" or "!" mark.

9. ADVICE

It's recommended that you use this USB IDE External Enclosure in bus-power mode. If it can't work properly, please use it in self-power mode.



1. Carefully remove cover from HD enclosure



2. Insert SATA hard drive



3. Securely tighten screws from the bottom of HD enclosure to fix hard disk (4pcs short screws)



4. Assemble PCB shielding above PCBA



5. Replace cover onto HD enclosure



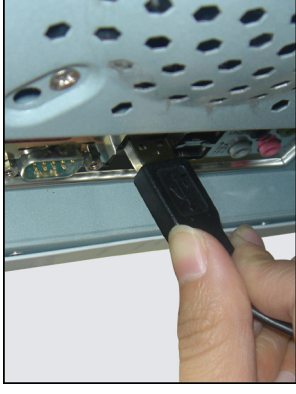
6. Use screws (2pcs longer, 2pcs shorter) from the bottom of HD enclosure to tighten it



7. Plug USB into the HD enclosure



8. Plug adapter into the HD enclosure



9. Plug USB cable into PC or laptop



10. Plug adapter



11. Press the switch for power on