



CONTENT

LAN and USB External 3,5" HDD Enclosure



User's Manual

DA-70520

1. Product Information.....	1
2. Product Specifications.....	2
3. System requirements.....	3
4. Take a look to the Product.....	4
5. Product Assemble Step.....	5
6. Product Connecting.....	8
7. Driver Installation (USB2.0)	9
8. Verification.....	12
9. Configuring LANDISK.....	13
10. Note.....	22

1. Product Information

- Personal Internet & Intranet Storage
- Samba Server + FTP Server
- No need to install any O.S, Virus free
- Low Cost and Simple Installation
- Low Power Consumption, Low Heat Dissipation
- Serve Cross-Platform Client O.S.
- Web Browser Management User Interface
- Multi Protocol Support: TCP/IP, HTTP, SMB, FTP
- Support DHCP / Fixed IP Address
- USB2.0 High-speed data transfer rate up to 480 Mbytes
- 64/512 bytes data payload for full/high speed bulk endpoint
- Supports 8-bit/16-bit standard PIO mode interface
- USB2.0 high-speed interfaces & RJ45 for barrier-free data transfer
- Supports power down mode and USB suspend indicator

Product Specifications:

• Network Connection Method

Available network environment, 100BASE-TX/10BASE-T,
Connection type, RJ-45

• Supported Protocols

TCP/IP, NBNS (Net BIOS Name Server), Microsoft Networks
(CIFS/SMB), HTTP 1.0 and HTML 2.0, DHCP Server/Client (Auto
detection), SNMP Client and Telnet Server

• Supported Operating Systems

Microsoft Windows: 98SE, ME, 2000, XP
MAC OS X (10.3.X or above versions)

• IP Acquisition Method

Automatic (DHCP)/Manual (Static setting)

• Supported Hard Drive Specifications

SATA / SATA II HDD's

• Partition Configuration

FAT32 (4GB Max File Size)

3. System requirements

Windows 98SE / 2000 / XP:

Pentium II 233MHz equivalent or higher

64 MB RAM (128 MB recommended)

USB 1.1 Port (USB 2.0 recommended)

CD-ROM drive for installation (Win 98SE only)

RJ45 network port for NDAS mode

Mac OS X:

G4 processor or higher running OS X 10.2 or higher

128 MB RAM (256 MB recommended)

USB 1.1 Port (USB 2.0 recommended)

RJ45 network port for NDAS mode

4. Take a look on the Product

1 Power LED

2 Working LED

3 System LED

4 Link LED

5 Reset to Factory Default

(Power on, press 15sec)

6 Receptor of Power Adapter

7 USB Port: USB1.1/USB2.0

8 LAN Port: 10/100 Base-TX



5. Product Assemble Step

1) Take off the front panel, pull out the product module from the housing.



2) Connect hard drive on the product module.



3) Use the screws to fix it firmly.

5



4) Close up the product module from the housing.



6

- 5) Use the bundled screws to screw it firmly.
Top and bottom side (also screw it firmly).



- 6) Product assemble step complete.



7

6. Product Connecting

- 1) Connecting USB2.0 SATA external enclosure to your computer.



- 2) Connect LANDISK to your network.



8

7. Driver Installation

• WINDOWS 98SE

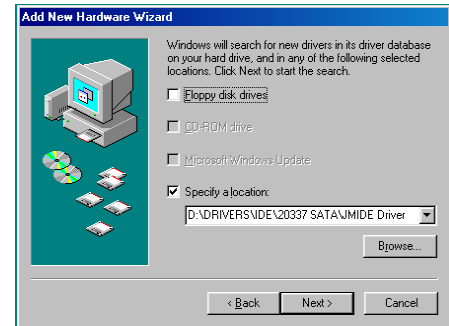
- 1) Plug the SATA external enclosure in a USB port of your computer, the system will detect it and start "Add New Hardware Wizard".
- 2) When you see the following picture, please press "Next".



- 3) When you see the following picture, please check "Search for the best driver for your device (Recommended)" and press "Next".



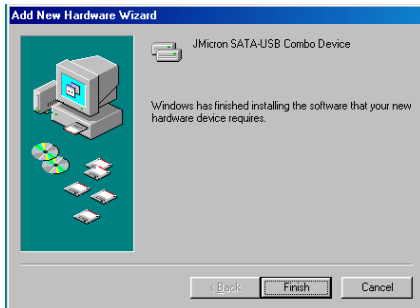
- 4) When you see the following picture, please locate the folder "JM20337 Driver" included on the driver CD-ROM shipped with this SATA external enclosure.



5) When you see the following picture, please press "Next".



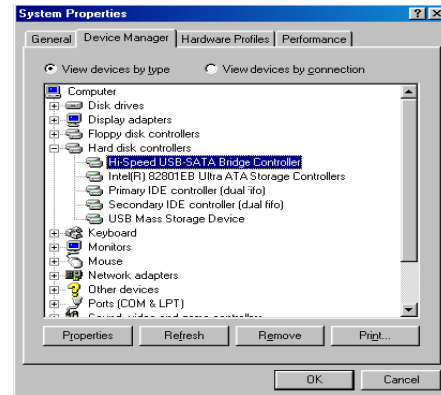
6) When you see the following picture, please press "Finish".



- **WINDOWS ME/2000/XP AND Mac 10.3.X or above**
Need no driver installation.

8. Verification

Please track the path "My computer→System Properties→Device Manager" and expand the item "Universal Serial Bus Controllers", you should see the following screen.

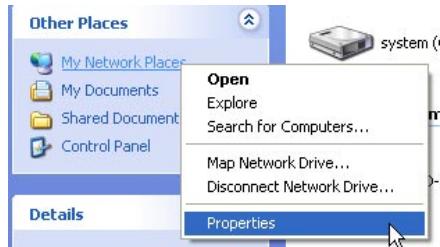


9. Configuring LANDISK

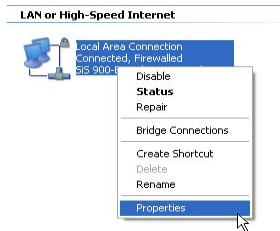
• Checking TCP/IP Setting on PC

Bring up the properties of the “My Network Places”(Windows XP).

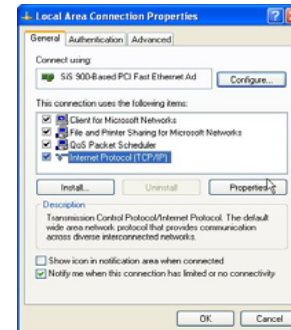
- 1). Double click the “My Computer” icon on your desktop.
- 2). Right click “My Network Places” and select “Properties”



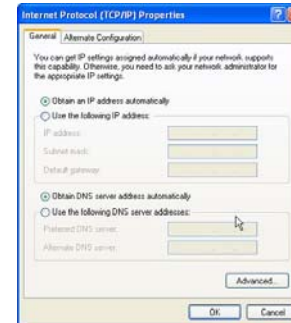
- 3) Right click “Local Area Connection” and select “Properties”



- 4) The following screen will appear, select “Internet Protocol (TCP/IP)” then click on the <Properties> button



- 5) Follow the step as below to configuring your TCP/IP settings.



• Using Web Control Utility

1) Open your Web browser and type "http://storage" into the URL address box and then press <Enter>.



2) The login pop-up dialog box will appear, please type the following default username and password:

Username: admin Password: admin



3) Once you have logged in, the "Status" Home screen will appear.

Host Name: Setting Up Your Own Host name

Group Name: Setting Up Your Own Host name

Administrator: Setting Up Your Password

Date/Time: Setting Up Your Time zone

Language: Setting Up Your Language

DHCP Server: Enable / Disable Your DHCP Server

NOTE: Make sure to press "Change" for the settings to take affect



4) You can select a function from the left side menu.

Status
IP Config
Maintenance

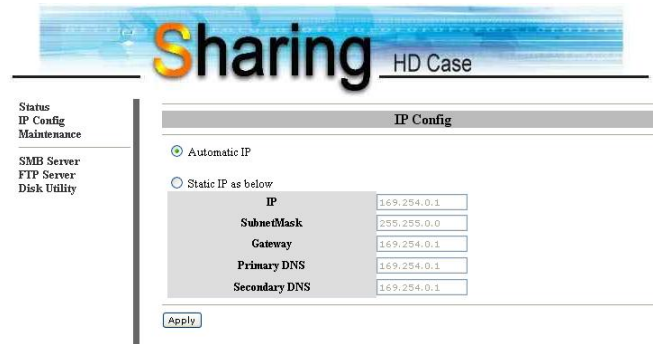
SMB Server
FTP Server
Disk Utility

5) Formatting Your Hard Disk

If you have installed a new hard drive in the LANDISK, you must go to "Disk Utility" for creating a new Partition and doing format for the hard disk. **(Disk Utility)**



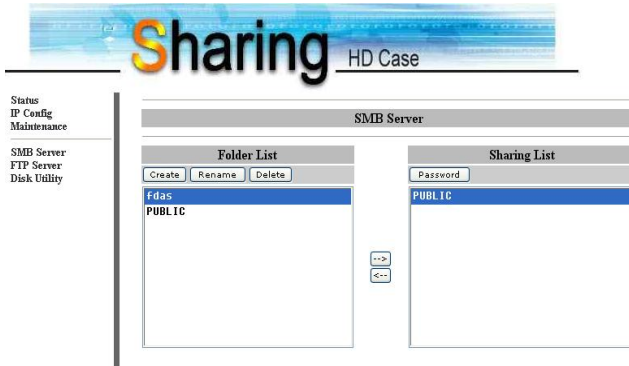
6) Here you can set the IP configuration (Automatic IP or Static IP) as below: **(IP Config)**



7) Sharing Your Folders to LAN

You will see all available folders for “Network Share” listed in the “Share List” box, just select your target folder and click on the “→” button for sharing the folder to Network.

(SMB Server)



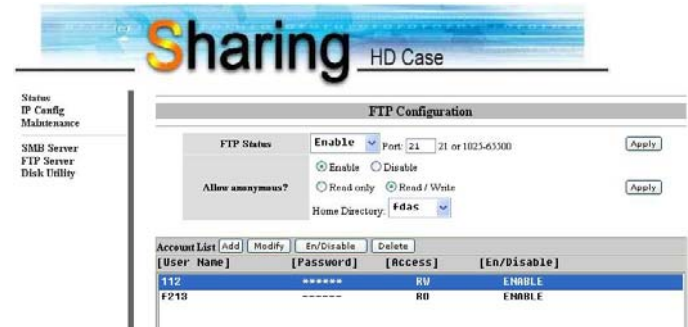
8) FTP Configurations

Here you can set FTP functions, status and user's authority, please check the image below. **(FTP Server)**

FTP Status: Enable / Disable FTP function and port setting

Allow anonymous: If you allow anonymous log-in the “Home Directory” will be the root folder

FTP Account List: Presses “Add”, “Modify ” to set the accounts that you allow accessing LANDISK, and defining the authority.



9) Maintenance

Firmware Upload: Here you can update the new firmware for your LANDISK.

System Reboot: Click Reboot to have the device perform a software restart.

Factory Defaults: You can Press “Reset” here then refresh this page by pressing “Refresh button” on IE browser, or reboot the LANDISK to recall all settings back to factory default status.



10. Note:

- 1) If you are installing an old hard drive and want to keep all previous data, please make sure the file system on your hard drive is FAT32. LANDISK does not support any other file system than FAT32. Otherwise, you may need to re-format your old hard drive by LANDISK's utility
- 2) The LAN Port on the LANDISK is Auto-MDI/MDIX, you can also connect the network cable directly to the LAN port on your computer. It is not necessary to use a crossover network cable for direct link.
- 3) If you prefer to use a Fixed IP for your computer, please also setup a fixed IP for LANDISK.