



# COMPUTER SECURITY LOCK - KEY LOCK -

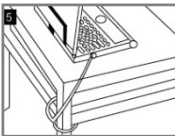


## Quick Installation Guide

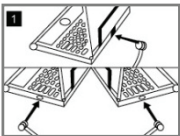
Model: DA-40501

### Instruction of usage

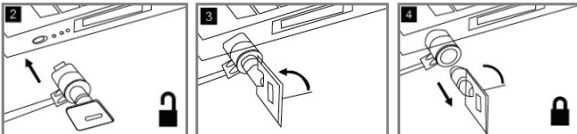
1. Fix the cable into a not easy moveable object, such as a table or a cabinet.



2. Put the lock through the hole at the end of the cable.
3. Plug the lock into the safety hole of the Laptop or desktop.



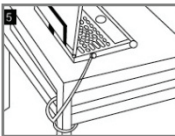
4. Use the key to switch to Lock position.



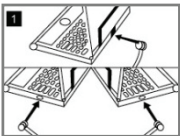
GB

### Instruction of usage

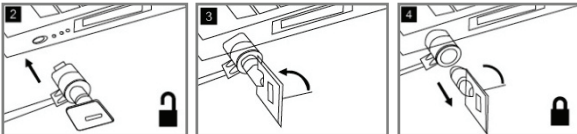
1. Fix the cable into a not easy moveable object, such as a table or a cabinet.



2. Put the lock through the hole at the end of the cable.
3. Plug the lock into the safety hole of the Laptop or desktop.



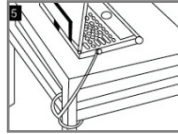
4. Use the key to switch to Lock position.



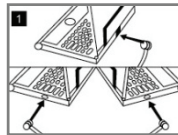
GB

### Bedienungsanweisungen

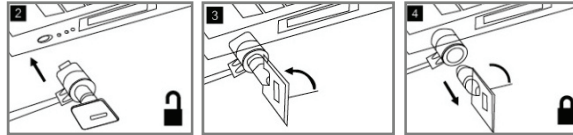
1. Befestigen Sie das Kabel an einem nicht leicht umsetzbaren Objekt, wie einem Tisch oder einem Schrank.



2. Führen Sie nun das Schloss durch die Öse am Ende des Kabels.
3. Stecken Sie das Schloss in die Sicherheitsöffnung des Laptops oder des Desktop-PCs.



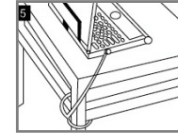
4. Drehen Sie den Schlüssel in die abgesperrte Position.



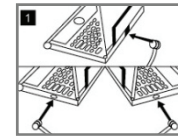
DE

### Gebruiksaanwijzing

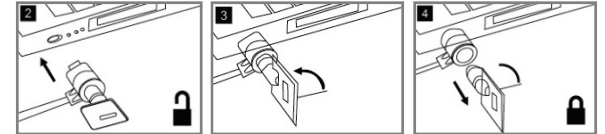
1. Bevestig de kabel aan een niet zo eenvoudig verplaatsbaar object zoals een tafel of een kast.



2. Haal het slot door het gat aan het eind van de kabel.
3. Steek het slot in het veiligheids gat van de laptop of desktop.



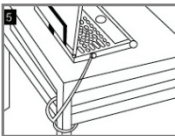
4. Gebruik de sleutel om het op slot te zetten.



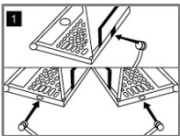
NL

### Instruction of usage

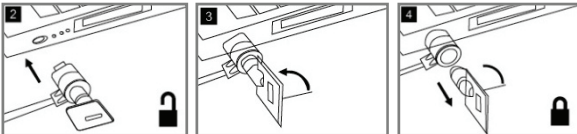
1. Fix the cable into a not easy moveable object, such as a table or a cabinet.



2. Put the lock through the hole at the end of the cable.
3. Plug the lock into the safety hole of the Laptop or desktop.



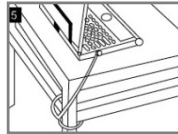
4. Use the key to switch to Lock position.



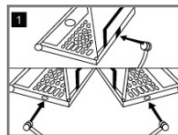
GB

### Mode opératoire

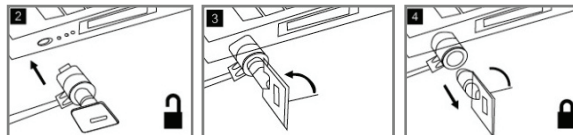
1. Accrochez le câble à un objet fixe, tel qu'une table ou une étagère.



2. Placez le cadenas à travers l'orifice situé à l'extrémité du câble.
3. Accrochez le cadenas à l'orifice de sécurité de votre ordinateur de bureau ou ordinateur portable.



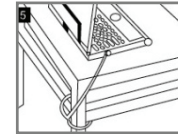
4. Utilisez la clé pour verrouiller le cadenas.



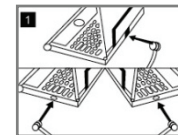
FR

### Istruzioni per l'uso

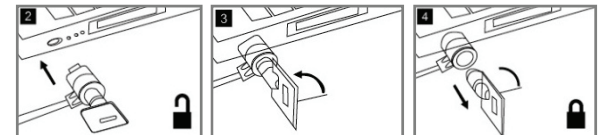
1. Fissare il cavo ad un oggetto difficile da spostare, come un tavolo o un armadio.



2. Mettere il blocco attraverso il buco all'estremità del cavo.
3. Inserire il blocco nel buco di sicurezza del vostro laptop o PC.



4. Utilizzare la chiave per aprire o chiudere il blocco.

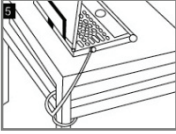


IT

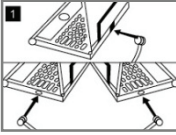
## Instrucciones de uso

ES

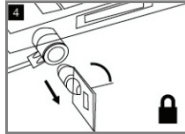
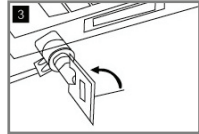
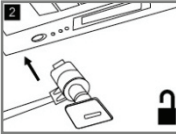
1. Fije el cable a un objeto fijo como una mesa o un armario.



2. Inserte el candado a través de la abertura en el extremo del cable.
3. Conecte la cerradura en la ranura de seguridad del ordenador portátil o de sobremesa.



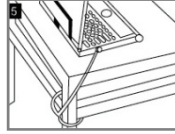
4. Utilice la llave para establecer la posición de bloqueo.



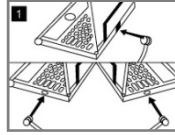
## Wskazówki użytkowania

PL

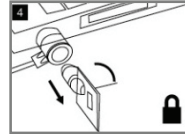
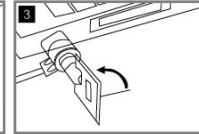
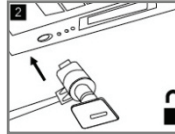
1. Zamontować kabel przy trudnym do przeniesienia przedmiocie, takim jak stół lub szafa.



2. Przeciągnąć zamek poprzez otwór na końcu kabla.
3. Włożyć zamek do otworu zabezpieczenia laptopa lub komputera stołowego.



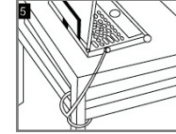
4. Kluczem przełączyć w położenie zamknięte.



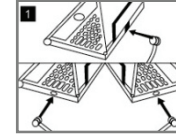
## Kullanım talimatı

TR

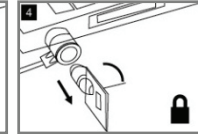
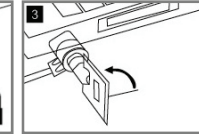
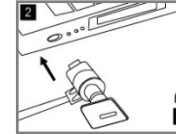
1. Kabloyu, masa ya da dolap gibi kolay hareket ettirilemez bir nesneye sabitleyin.



2. Kilidi, kablunun sonundaki delikten geçirin
3. Kilidi, dizüstü ya da masaüstü bilgisayarın güvenlik deliğine takın.



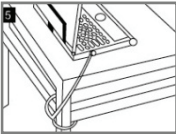
4. Lock (Kilit) konumuna geçmek için anahtarı kullanın.



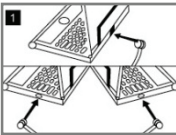
## Инструкции по использованию

RU

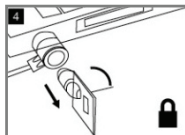
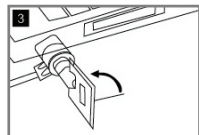
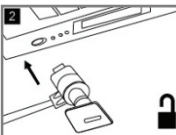
1. Прикрепите кабель к предмету, который сложно сдвинуть с места, например к столу или шкафу.



2. Установите замок в петле на конце кабеля
3. Вставьте замок в отверстие для замка на ноутбуке или настольном компьютере.



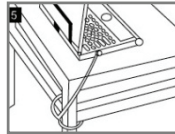
4. С помощью ключа закройте замок.



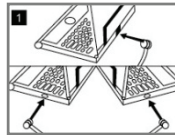
## Instruções de Utilização

PT

1. Prenda o cabo a um objecto difícil de mover, tal como uma mesa ou um armário.



2. Introduza o cadeado no orifício na extremidade do cabo.
3. Ligue o cadeado ao orifício de segurança do computador portátil ou do PC.



4. Rode a chave para alterar para a posição Trancado.

