

USB2.0 SATA External Enclosure

User's Manual

CONTENT

1. Characteristics	2
2. System Requirements	2
3. Verification	3
4. FAQ	4
5. CAUTION	5
6. ADVICE	6

1. Characteristics

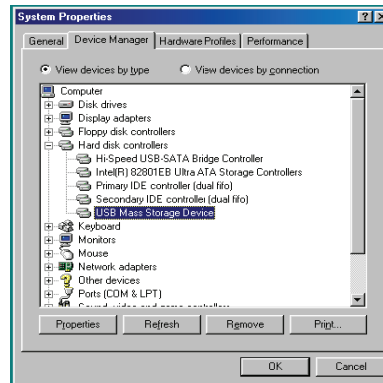
- Compliant with both USB 2.0 and USB 1.1 standard specifications
- High-speed data transfer rate up to 480 Mbytes
- 64/512 bytes data payload for full/high speed bulk endpoint

2. System Requirements:

- 1) USB Interface: an available USB port
- 2) OS: windows/2000/XP/Vista,
Mac OS 9.2 10.x or later.

3. Verification

Plug the device to your computer, after drivers are loaded, please track the path “My computer→Properties→Device Manager” and expand the item “Universal Serial Bus Controllers”, you should meet the following screen.



4. FAQ

Q1: I could see the icon at the right down corner on the screen, but I still couldn't find my external HDD.

A1:

- a. a. Please make sure your HDD has been installed correctly.
- b. Please make sure your HDD has been set in “Master” position.
- c. Please make sure you have installed correct driver for this enclosure.
- d. Please make sure your HDD has been formatted. If no, please format your hard drive first.
- e. If you are sure you have installed correctly all the hardware and software, please follow the steps as below to catch your HDD.
 - i. Enter “Control Panel” and enter “System” icon
 - ii. Double click it to find a “System Manager”.
 - iii. Find a “Disk” category. There should be 3 drivers, double click “Generic STORAGE DEVICE USB Device.”
 - iv. Find the “Setting” button and choose the option “Removable Drive”.
 - v. Your computer will automatically assign a new letter to this protable HDD after restarting your computer.

Q2. Why I couldn't find my enclosure at all?

A2: This situation sometimes happens to some notebook models. That's because a few notebook manufacturers remove the power current from USB port to reduce the heat in the notebook. Or some old models couldn't supply sufficient power for USB. This problem mostly couldn't solve the problem, please buy a AC power adaptor to offer sufficient power for enclosure.

5. CAUTION!!

- a. When using USB 2.0-interface model, external power is needed when HDD consumes power over 550mA.
- b. If you are not sure what OS you are using, please contact your PC dealer.
- c. Please don't put this external enclosure in a humid or high-temperature environment.
- d. If your first installation is failed, please firstly remove the wrong device through the path as below: Path=Control Panel > System > System Manager > PCI to USB Open Host Controller > Please remove the items with "?" or "!" mark.

6. ADVICE

It's recommended that you use this USB SATA External Enclosure in bus-power mode. If it can't work properly, please use it in self-power mode.